



19 November 2020

Putting on a Class Play - Why and What For?

Speech Teacher Robyn Hewetson writes about the class play.

This article will be published in two installments, this week and next.

Putting on a plays is one of the most social arts. When we play a sport, usually one team wins and the other loses. In a play - done well, everybody wins. It is an activity which needs both the work of the performers and the audience. It is the most human of the arts, arising through its long development from children's play.

Pedagogical theatre strives for those brief moments when performer and audience are lifted into states of imagination. Theatrical moments are those wonderful moments when performer, audience and play meet and something transcendent is enabled to spiral out into the life of creativity in the theatre.

These are moments when we discover ourselves as **becoming human beings**.

Rudolf Steiner said the three main reasons to do theatre in our schools were:

1. *To develop zest, vigour and enthusiasm for life.*
2. *To explore the world of soul.*
3. *To develop the faculty to recognise your own destiny in the thick of the Moment.*

This means noticing those moments when you are being your most creative and then suddenly you notice something which speaks to you clearly. This is a skill for life - which is grown almost entirely while performing.

Considering doing a play in a school setting we must take time to consider what we are doing and why we are doing it.

We are usually choosing a story from the curriculum which we will share in a performance with the students taking on different parts of the story so that the audience has a living representation of all the characters and the drama so that they can experience the story and feel the lessons learned.

Even today we call the group of people who come to the play the 'AUDIENCE' This is hugely important in today's digital age, because the most important thing the audience can contribute is their own listening souls. For the drama to work, the audience needs to "Hear what is said." To let it speak to their souls.

The Class Play is a huge effort from the teacher and students and all the very many other staff who help to make costumes, play music, make programs and sets and props. All this is made to bear a gift to the community. This gift is meant to be received into the hearts and minds of the audience.

One of the things we need to manage today is to create a culture of how phones and cameras are dealt with. Some classes create a rehearsal where photos can be taken. This enables a school performance where everyone can sit in wonder and really see the play - hear every word, enjoy the jokes and the drama and find the moving moments when students are able to portray a character in crisis, or in love. Characters can show us something of what it is to be human.

So this is in our Communities of Waldorf Schools - the plays need to be received with honour and with open hearts and minds. I find so many of my life changing moments were had in a theatre where I saw a school group really show a story in play - and where some of the characters really revealed something relevant to me which I needed to learn. I find I can remember the whole moment, the lighting, the scenery, the words and actions of the players.

Continued over page.....

SCHOOL NOTICES

Setting up the place so that that audience has the best view of the play is also essential. I see many schools who have a wide central aisle but since the dawn of time this is where the best view is to be had. Right in front in the middle of the theatre where you can see straight ahead and easily to left and right is the best place for the audience to be.

Making it clear that your audience is there to look and listen, not to get up and walk around, but to give the players on the stage full attention is a culture which needs to be revived in modern life.

Putting on a School Play is very often a time when the parents learn the most from the curriculum. They see the play and can recognise moments of human folly or deceits or triumphs which can help to illuminate things in their own life. Having a play which helps people to both laugh and cry is the ultimate in a dramatic production. This shows us that the souls of our audience have moved. This is our whole goal.

So why do we laugh and cry?

When we laugh, Rudolf Steiner tells us, it is because we feel larger than life and this makes us take in a huge breath and breathe out a broken breath; "ha ha ha!" Until all our breath is gone. We take in a huge breath and breathe out a broken breath. You can notice that by laughing out loud until all the laughing is done, you can find yourself "coming back to size." Coming back into yourself fully.

So why do we cry? We cry when we feel that life is too big for us. When this happens we take in a broken breath "ah ah ah. . ." and we wail out a long breath on a cry: waaaaaaaaaaaaa!" When we cry until all the crying is done, we can notice we have come back to the centre and can feel more able to cope.

Theatre is working with these two huge healing soul experiences, and that is why it is so important for us to give our whole attention to the plays our children show us, to allow ourselves to be able to laugh out loud or to cry. If we let this happen, we can notice when we are leaving the play, we feel renewed, revived by the play.

School plays are part of the activity to heal the soul life of the whole school. We begin in Steiner Schools by watching children's play and by incorporating the stories of early childhood into puppet plays, playground games. When children play they are literally creating worlds. They are internalising the worlds they make. This helps them develop an imagination of their whole world. The teacher's role here is finding the right imagination which will make the play possible. This moves the children into play acting. Several important things are being developed by the children in their play-acting. First they are developing the ability to work artistically through their imaginative playing with the story. Secondly they are building a theatrical vocabulary of gestures, movements and manners of speaking that if guided properly by the teacher will form the foundations for their subsequent acting. And, most importantly they are working artistically through the social constellation of their group to form themselves into an ensemble.

Waiata Mai Every Thursday, From 12:30 – 1:00 p.m

Ngā mihi maioha ki a koutou e te whānau whānui o Taikura!

Waiata mai has started again. This will be every Thursday from 12:30 –1:00 pm in the Library. If you want to learn some of the waiata that your children sing at school, nau mai, haere mai te katoa.....all are welcome!

Ngā mihi mahana ki a koutou ngā kōpara e kō!

Nā Troy Gardiner

Mark Your Calendar

November 22	10:00 am - 3:00 pm	Taikura School Fete
November 27	11:00 am -12:30 pm	Class 12 Cushion Concert For The HS and Community in The Hall
December 2	ALL DAY	Teacher Only Day - SCHOOL ONLY
December 2	7:00 pm	Steiner - No Silly Questions - Whānau Room - Taikura Kindergarten
December 4	8:45 am - 9:00 am Start	David Urieli - Christ Before Christmas
December 8	5:30 pm - 9:00 pm	Class 6TM - Mixed Medieval Performance
December 16	7:00 pm - 8:00 pm	Carol Evening - Gym - The Last Day of School For 2020

SCHOOL NOTICES



He pito kōrero!



The picture above shows the tipu (shoots) from the kūmara that are growing in our school nursery. As we come into Whiringa-ā-rangi, the sixth month of the mamarataka, when the environment is warmer, for many it is a time for planting the tipu, which at Taikura will happen very shortly!

Kīwaha o te wiki ... phrase of the week!

He momo tonu! (here mor mor tor nuu)

True to form, it's a family trait, inherited quality, hereditary trait!

Hemi: Kia ora Rangi, kei te aha koe...what are you up to?

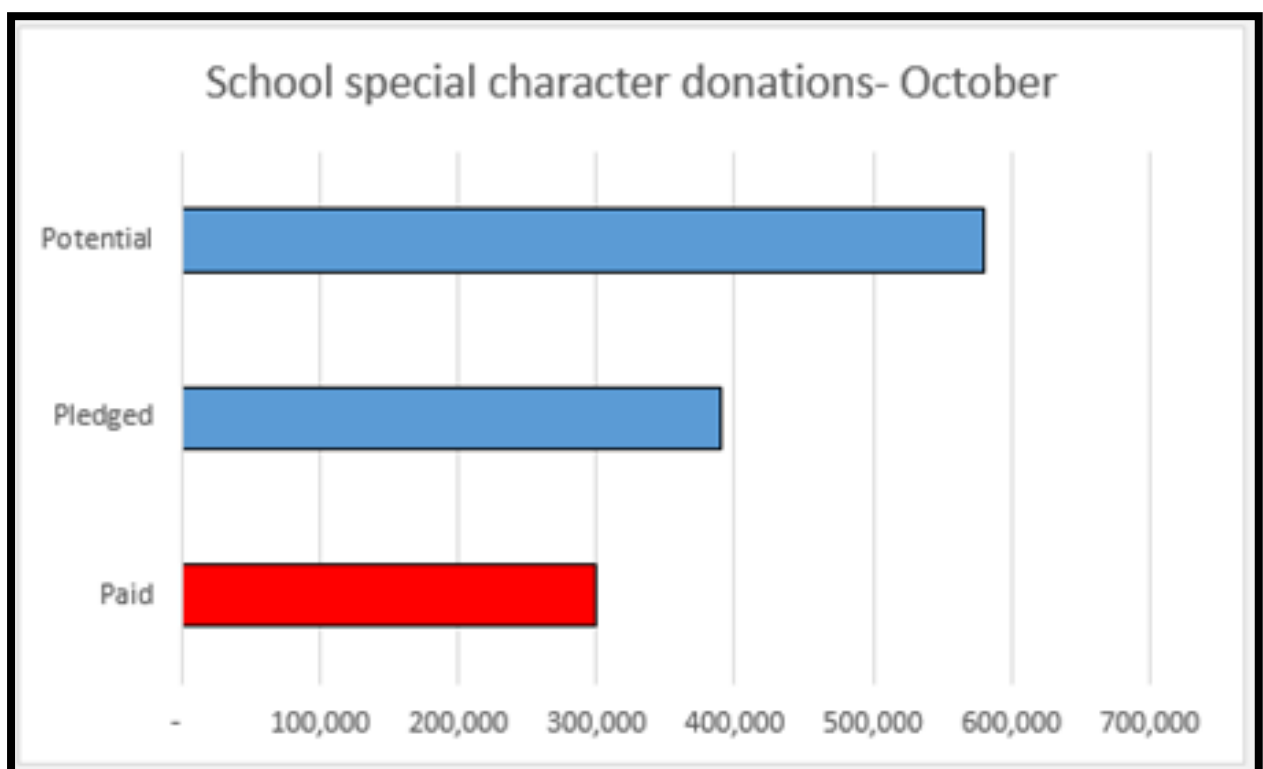
Rangi: I'm doing orchard work to save for hostel fees next year!

Hemi: Didn't your bro's do the same to get money for Uni? He momo tonu!

He pito kōrero is a space dedicated to celebrating and promoting Te Reo me ōna Tikanga Māori.



Finance Update



SCHOOL NOTICES

Taikura Parents Group

Welcoming everyone in the community to these free talks and gatherings (including parents, grandparents, past parents, those on the waiting list).

Join us in the warm and relaxed space of the Hastings Taikura Kindergarten (in their lovely community space - just inside their front door). We aim to create a parent supportive environment and all our gatherings are baby/toddler friendly. You are welcome to arrive and leave as meets your needs.

Our guest speakers begin at 9:00 am and usually finish about 10:30 am. Tea & coffee is freely available from 8:45 am. Donations of food for the morning tea are appreciated. For questions, suggestions, and offerings please contact Filipa Hope 0274513445 or Melanie Sims 0274 555 300

Next Parent Group meetings:

- **Friday 4 December** - David Urieli: Christ before Christmas - Looking at the pre-Earthly deeds of Christ.

Class 7 Sausage Sizzle Fundraiser

Class 7 are having a sausage sizzle on Friday 20 November. Come along and support their fundraiser for only \$2.00 a sausage. See you outside Edwin Ayre.

Nga mihi - Darryn

Steiner - No Silly Questions

Everything you wanted to know about being a Steiner parent (but were afraid to ask).

The basics, the myths, the history with plenty of space to ask questions (there's no such thing as a silly one!).

Moving from Kindy to School is big for the kids, and enormous for their parents! Come along to Steiner - No Silly Questions, the real oil on being a Steiner Parent from the perspective of a Steiner Kid! From Whitsun to Advent, Form Drawing to Eurythmy, and everything in between. Be prepared for the amazing journey ahead.

A talk by Jess Soutar Barron, Steiner student (Michael Park) and Steiner parent (Taikura).

Come along to the Whānau room on Wednesday 2 December at 7:00 pm and join us for this exciting talk. We look forward to meeting you there.

Enrolment Confirmation

We are confirming our classes and enrolments for next year, and part of this process is communicating with whānau on our waiting list. If you are considering another school for your child, moving away from the area, or your child intends to leave before graduating please do let us know as soon as this is confirmed in order to assist us with our planning.

"Bee" Safe Wear Shoes!

Our main field always attracts the buzz of our friendly little workers of the flowers. To ensure the children are safe from harm please check that they have suitable shoes on at all times. This is up to parents and staff to enforce. If you see one of our children on the field without shoes on, please ask them to go and put some on.



Part Time And Casual Staff Required

We require part-time and casual staff for the School Canteen. Please apply at the canteen or contact Matthew on 020 4025 9211

Found Items

I have two watches that have been lost around the school at various times. One is not very old and was left in the library. A silver chain with disc and the letter "O" stamped on front. Also a gold patterned hoop earring. Please see Adrienne in the office if you think one of these items may be yours.

SCHOOL NOTICES

End Of Year Parent Teacher Interviews: Lower School

Dear Parents of Lower School Children

During Week 8, we will be having Parent Teacher Interviews. This year we were due to trial a different reporting format from previous years. In the past we have sent two reports home, a brief report and parent teacher interview mid year, followed by a longer written report at the end of the year.

To book your interview:

When you log in you will see each class teacher has a range of times on various days available for interviews. We trust that the many options available will make it possible for all families to attend.

Please note that the interview bookings will be **closing 4:00 pm Friday 27 November**.

Please Note: On Wednesday of interview week is our teacher's only day. We will be having interviews on this day and into the evening.

Warm wishes Kelly Sutton for the Lower School

Bookings open on Monday 16 November 2020

How to Book

1. Log onto the following website: <http://www.schoolinterviews.co.nz>
2. Enter the following code into the 'event code': **pbrr4**
3. You will then be guided by the website.

Parents who do not have access to a computer can phone Adrienne to book an appointment. We encourage you to book on-line please.

Sports Notices

Earlier this year we secured funding for new netball dresses for the Lower and High School teams.

It has been awesome to see the girls from Class 3 to Class 12 take to the court this season looking smart in the new uniform. (Our male players wear their own PE tops)

A big thank you to New Zealand Community Trust for the funding.



Congratulations to the Class 7 netball team, who have won their third gold medal. This year they played in the Year 9 High School grade, in the second division, and won every game. They were all really happy with this achievement as stepping up into the High School grade was an unknown.

The team says that they have experienced success because of the good communication amongst the team and knowing each other so well, coming from the same class.

They also give credit to their coach, Angeline Ramsay, who they describe as inspiring. The team would like to say "a huge thank you to Angeline for being supportive, hardworking and taking the time out of her busy life to teach us every week. We'll really miss you – you are amazing!"

This beautiful photo acknowledges the team and their coach and also showcases the new netball dresses. The team were so grateful and proud to play in these smart new dresses.

Sarah Millington
Team Manager



When human beings meet together seeking the spirit with unity of purpose then they will also find their way to each other.

Rudolf Steiner

Taikura Fête Sunday 22 November 2020

It's Fête day on Sunday! Please spread the word amongst family, friends and colleagues so that as many people as possible can experience this joyful day.

Magic Beans

Magic Beans will be on sale at the discounted rate of **\$12 for 15** Magic Beans (including pouch), or **\$22 for 30** Magic Beans (including pouch) at the school gate from 2:45 pm-3:20 pm until Friday 20 November. To facilitate Kindergarten parents, they will also be on sale at lunch-time pick-up on Friday 20 November in the Taikura Kindergarten Parent Room.

Setting Up

Please ensure your stall is set up completely by 9:00am on Sunday 22 November. You may access the grounds from noon on Saturday 21 November to set up. The grounds will be patrolled by HSM security guards overnight.

Please arrange to set up without young children in tow – this will be an active site and we would like to ensure everyone's safety and comfort.

Vehicle Access

Vehicle access to and from the site is from King Street, next to Taikura House. If you take a vehicle onto the site, the maximum speed inside the grounds is 5km/h. Please be mindful of children. On Sunday, the site must be clear of vehicles by 9:00 am. There will be no vehicular access to the grounds before 3:15 pm, when the big field has been cleared of children.

Parking for Stall Holders

Community and external stall holders should park on King Street. Please **DO NOT** park on Nelson Street or Whitehead Road near school so that there will be spaces for guests attending the Fête.

Administration Centre

When you arrive on Sunday to set up your **FOOD STALL**, please check in at the Administration Centre in the Gym Foyer. From here you can collect your float, provisions, and other essential information. The following services are available:

- Information and administrative support
- Sustainable supplies including cups, plates, napkins, utensils etc.
- EFTPOS with cash out
- Money exchange and collection facilities
- First Aid services
- Safety equipment
- Lost children hub
- Magic Bean sales

Financial Arrangements

Food stalls will be provided with a cash float on arrival. Periodically, one of the administration staff will collect surplus cash. At the end of the Fête please bring your float and takings to the Administration Centre.

Children's activities will operate on a **STRICTLY MAGIC BEAN** basis. If someone would like to pay in cash, please direct them to the nearest Magic Bean Sales point – at the Main Gate, the Administration Centre, and by the pizza oven at the entrance to Scannell's garden. Should the bean vessel become full before the conclusion of the Fête, they may be emptied at the Administration Centre. At the end of the Fête, please bring bean vessels to the Administration Centre at 3:00 pm, and no later than 4:00 pm.

Candleboats Return To The Fete

A small group of people passionate about seeing the candleboats at the Fete are asking anyone else who would like to help to please get in touch. We will need help with ticket selling, ushering and lyre playing. Thank You.

Tineka 0277255942 - tinkferg@outlook.co.nz

Corrie 0273680242 - corrie.levick@gmail.com

Participation

Heartfelt thanks for coming together as a community to create such a unique event. You should all have confirmed jobs at the Fête. Please check where you are meant to be on the map, and arrive in good time for your shift. There are some activities that need further support so please let us know if you are available. Please also be prepared to be flexible to adapt to circumstances on the day.

Stall Dismantling

Dismantling of stall sites may take place after 3:00 pm, with all materials removed by 6:00 pm on Sunday 22 November. Items remaining on site after this time will be removed and disposed of. Please ensure the grounds are returned to their original condition after the Fête.

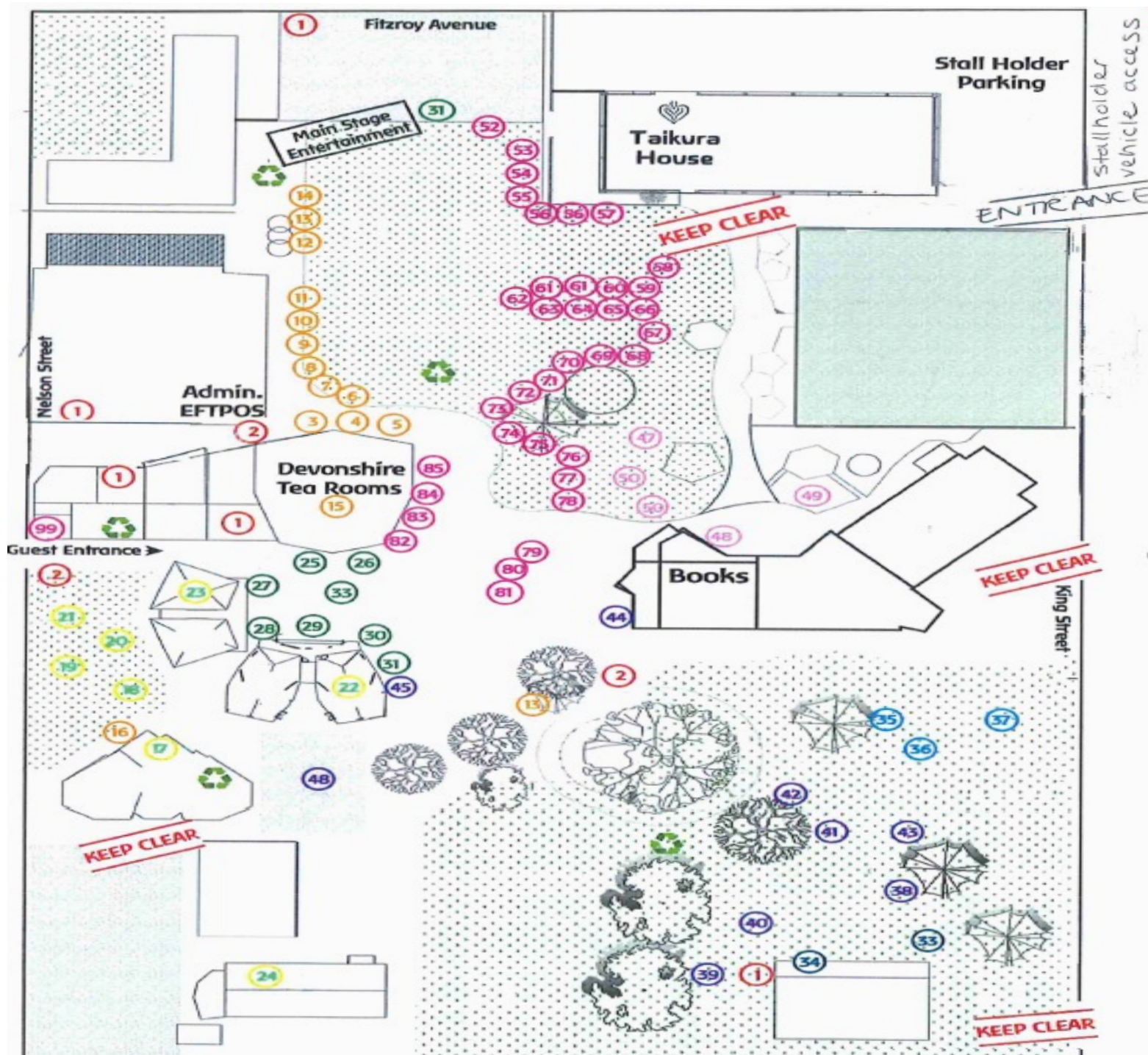
Health & Safety

Please note

- No smoking, e-cigarettes, vaping, drugs or alcohol anywhere on the school grounds
- No animals allowed on site
- Use gloves and be conscious of hand washing, particularly when serving food. Those preparing and serving food must not also handle money.

Fête Proceeds

All fête proceeds are set aside to be used towards projects which need attention at Taikura. 2020 proceeds will be added to 2018 and 2019 proceeds and used towards the construction of a beautiful, functional and natural playground for the Lower School.



Services

1	Toilets
2	Magic Bean Sales

Health & Healing

48	Truly B
49	Astroplus
49	3R Massage HB
50	Concordia Health
51	Balanced Being

Market Stalls

52	AJR Fashion
53	JoJoBee
54	Mayfair Lady
55	Mundo
56	Viola Flair
57	Cherries and Wine Vintage
58	NZ Wood & Jade
59	Rustic Touch
60	Sand Art
61	Juniper
62	Taikura Kindergarten
63	Junk at Home
64	A Little Bit Vintage
65	Sqarlett's Beeswax Wraps
66	Tanglewood Toys
67	Soft Earth Art
68	Quaint

69	Beetle Magic
70	Wyrd & Wonderful Magpie Treasures
71	Bhuvani Bazaar
72	Barefoot Mama
73	Handmade Happiness
74	Sashe
75	Goldkinder
76	Naturally by Tam
77	Pacifica Garden Art
78	RooB Woodwork
79	Tuki Tuki Instruments
80	Jubilee Pipes
81	Lush
82	Crystal Child
83	Raranga Rongoa
84	Dye4U
85	Zam Earrings

Services

- | | |
|---|------------------|
| 1 | Toilets |
| 2 | Magic Bean Sales |

Food

- | | |
|----|------------------------------|
| 3 | Coffee |
| 4 | Cakes (Class 1) |
| 5 | Drinks & Ice Cream (Class 5) |
| 6 | Waffles (Class 8) |
| 7 | Bread & Pastries |
| 8 | Pakorās (Class 11) |
| 9 | Salads (Class 7) |
| 10 | (Class 10) |
| 11 | Nachos (Class 3) |
| 12 | Burgers (Class 6TM) |
| 13 | Sausages (Class 12) |
| 14 | Falafel Pockets (Class 9) |
| 15 | Devonshire Teas (Class 4) |
| 16 | Children's Café (Class 6KS) |

Children's Wonderland

- | | |
|----|----------------------|
| 17 | Children's Shop |
| 18 | Treasures in the Hay |
| 19 | Crystal Panning |
| 20 | Humpty Dumpty |
| 21 | Fishing |
| 22 | Model Trains |
| 23 | Candle Boats |
| 24 | Puppet Theatre |

Arts & Crafts

- | | |
|----|-------------------|
| 25 | Face Painting |
| 26 | Hair Feathers |
| 27 | Flower Garlands |
| 28 | Fairy Wands |
| 29 | Cookie Decorating |
| 30 | Art Spin |
| 31 | 3D Art |

Wood Workshop

- | | |
|----|---------------------|
| 33 | Sword Whittling |
| 34 | Hot Burner Pictures |

Magic in the Woods

- | | |
|----|--------------|
| 35 | Fairy House |
| 36 | Ice Crystals |
| 37 | Potion House |

Fun & Games

- | | |
|----|----------------|
| 38 | Stocks |
| 39 | Archery |
| 40 | Water Bungee |
| 41 | Sumo Wrestling |
| 42 | Jousting |
| 43 | Coconut Shy |
| 44 | Photo Booth |
| 45 | The Shocker |
| 46 | Go Karts |

COMMUNITY NOTICES

Michael Park Kindergarten – Auckland

Kindergarten Teacher

Michael Park is an urban integrated area school providing a seamless Rudolf Steiner Waldorf education for children aged 3 - 18 years. <http://www.michaelpark.school.nz/> Our kindergarten is situated next to a park in central Auckland. It is licensed for 100 children with four mixed groups aged 4-6 years and a programme for younger children aged 3-4 years.



We seek a creative teacher to work with a group of 4-6 year olds and their whānau. A commitment to working with our philosophy and teacher registration will be essential. Full time or part time (.8) is open to discussion. The position begins March 2020. Remuneration as per the ASCA <http://ppta.org.nz/collective-agreements/area-school-teachers-collective-agreement-astca/>

For further information please contact centre manager Karen Affleck: karena@michaelpark.school.nz ph 095258996 To apply send CV and letter of application to danam@michaelpark.school.nz

Vacancy - Extra Lesson Practitioner

As an integrated Special Character area school with a strong and vibrant Lower School environment, we seek a qualified and experienced Extra Lesson Practitioner with a deep interest in Steiner/Waldorf education. This is a part-time 0.8 position.

The Extra Lesson Practitioner is primarily responsible for the working with specialist and class teachers to identify and support remediation of movement integration issues which become a barrier to formal learning. This incorporates support of teaching staff, work with children, assessment and reporting to parents. Specifically, The Extra Lesson work with the children.

Please send expressions of interest, including a cover letter and CV, to principal@taikura.school.nz
Applications close 1 December 2020 at 5:00 pm

Christmas Tree Fundraiser For Class 9

Beautiful, large trees (Pinus radiata) that have been grown on an organic and bio-dynamically run property for sale. They are \$30 each on a first come, first pick basis. Prior viewing for selection can be arranged, otherwise pick up is Sunday 29 November. Please contact Joanne on 027 901 7592 for purchasing/viewing and payment.



Hastings District Council
invites your school to

Santa's Grotto this Christmas!

This free community event takes place on various days between November 23 and December 19. It's a fantastic opportunity, filled with singing, dancing and Christmas stories from Santa and his Elves, to engage your tamariki this festive season.

Open to years 1-6 (aged 5 to 10/11) these sessions will take place in Functions on Hastings, at Toitū - Hawke's Bay Arts and Events Centre.

To make a booking contact:
Daniel Betty
Toitū Kaiwhakahaere Ratonga
Whakaari ā-Hapori / Presenter
Services Community Manager
danielb@toitovenues.co.nz
027 263 7694

toitū
Hawke's Bay Arts & Events Centre

HASTINGS
DISTRICT COUNCIL
Te Kaitiaki ā-Rua o Hastings