



3 November 2022

The Grapevine

Camp Kaitawa

Last week Class 6 loaded ourselves up with gear and food and made the journey north to Camp Kaitawa, near Waikaremoana, Te Urewera. Visiting a temperate rainforest we needed to make sure we were prepared for the cold and the wet, but Tawhirimatea smiled upon us and, other than sending cold winds off Lake Waikaremoana and Lake Waikareiti, we had wonderful sunshine. We went for a couple of tramps and had a great time kayaking on the sheltered lake beside camp. Our bonfire night, star gazing, and being scared by things that go 'boo' in the dark were other highlights.

Class 6 wish to extend their thanks to our wonderful parent helpers who worked amazingly to make sure that things behind the scenes went smoothly and everyone was able to have a wonderful time.







He pito kōrero!

Growing Kumara

Ngā mihi mahana o koanga ki a koutou katoa. Next week Class 3 are planting the tipu that they helped propagate in our school nursery. Due to this and the time of year we are in, I thought I would share Nathan Foote's kōrero about *Growing kumara*!

We are blessed here in Heretaunga with our climate, water and our soils. We have the ability to grow our own nutritiously nourishing homegrown kai throughout the year. Living seasonally with our kai also connects us to the rhythms of nature and the cycles therein. In our present moment in time, this late spring we can start to grow our own kūmara.

There are a good number of varieties of kūmara that vary in flavour and texture and also in growth habits. We have kūmara varieties that run vigorously like their "whanaunga" – relations, Bindweed or Convolvulus. The commercially grown variety commonly known as "Red" kūmara is one of these running types. The second growth habit and lesser known are those that grow in a bush form, for example "Taputini". The "Taputini" variety are also slenderer in form than the "Red" kūmara and they have white skin & flesh.

For those of us with limited garden space these bush types lend themselves very well should you wish to grow kūmara in your backyard. Small mounds are made above the ground instead of the now more common commercial practice of long rows in which the "Tipu" – sprouted plant, is placed and grown. You can grow your own tipu or buy them from a grower. Tipu are easily propagated and this is another story to be told at a later date and in the right season. Whether you grow in rows or mounds the planting of the tipu is very similar.

Ideally the "maramataka" – moon calendar is considered and the right moon phase is chosen to commence the planting of the tipu. The other consideration regarding a good planting time is the "waiata" – song of the "Pipīwharau" – Shining cuckoo. When the Pipīwharau's waiata has reached a certain climax, it is another "tohu" – sign, that it is time to plant your tipu.

"Ko tangi te wharau, kua tou te kūmara"

"When the cuckoo cries it is time to plant the sweet potato".

Healthy tipu also have their roots dipped into a mix of the soil they are to be planted into & water (to make a watery paste) overnight or for a couple of hours before being transplanted. The soil is cultivated into the mounds or the rows that the tipu will be planted into dependent on the variety of kūmara you wish to grow.

One of the keys to successful kūmara growing is to turn the roots up to form a "J" when you transplant into the soil. The tip of the J should be orientated to the east; this is according to most cultural practices very important. This is much easier to explain through demonstration rather than a written description.

Therefore, if you are new to growing kūmara then finding a local expert willing to share their valuable "matauranga"- knowledge will undoubtedly yield the best results. You are also connecting to a culture that has carried this "taonga" across oceans, nurtured the kūmara for a few millennia, and considers the kūmara with utmost importance and reverence. Once planted and depending on who you talk to, a single cup of water is given to the tipu, and in some areas that is all the water the plant will be given. Relying then on the tears of "Ranginui" – Sky father to quench its thirst during its long hot summer growing season.

Nā Nathan Foote (school parent)

He pito kōrero is a space dedicated to celebrating and promoting Te Reo me ōna Tikanga Māori





The H3 Group have deep appreciation for the opening of

"Sylvia's NURTURE SPACE"

Sylvia works in close proximity with Taikura and provides another opportunity for whānau by offering these wonderful therapies for our tamariki. Sylvia has worked hard to keep her opening rates as low as possible to ensure they are accessible, and Nature Space is generous in their support of Taikura. Sylvia Lane (Registered Nurse and Foundation certificate in anthroposophical nursing) offers anthroposophical rhythmical body oilings and footbaths and compresses to nurture children and adults.

Consider a nursing voucher as a Christmas gift idea - the perfect gift to support someone through what can be a stressful season.

Sylvia's "NURTURE SPACE" - in the heart of Hastings. All enquiries please contact Sylvia 021 024 178 25

sylvialane1976@yahoo.com

303 Lovedale Road,

4120 Hastings

Te Tāhuhu o Taikura

As part of Te Tāhuhu o Taikura we have identified expected behaviours for each of our values. As part of the embedding of this programme we are going to focus on a different expected behaviour each week. We will share our weekly focus in our Grapevine for the coming week so that families can participate and support also.

Te Tāhuhu o Taikura - Focus for Week 3 and 4

Our teaching focus this week will be **Respect/Whakaute**, specifically: **Clean Up After Yourself**

Waiata Mai Is Back - Thursdays – 12:30 – 1:00 pm - in the Library!

Ngā mihi hīkaka ki a koutou ngā manu tioriori o Taikura!

Waiata mai has started. Every Thursday in our Whare pukapuka – The library. If you want to learn some of the waiata that your tamariki sing at school, nau mai, haere mai te katoa....all are welcome!

Ngā mihi ki a koutou ngā kōpara e kō!

Nā Troy Gardiner

Outstanding Sports Uniforms

There are still quite a few outstanding winter sports uniforms.

Can these please be returned to the school office **washed** and in a **named bag** ASAP.

Janet Osborne - Sports Coordinator

Upcoming Events

November 9

November 14

November 20

November 21 - 25

November 25

6:00 pm - 8:00 pm

5:00 pm - 7:00 pm

10:00 am - 3:00 pm

3:30 pm - 8:00 pm

ALL DAY

Class 10 Parent Evening - Te Reo Maaori Room

School Board Meeting - School Hall

School Fete

LOWER SCHOOL **CLASSES 1-5 ONLY** Interviews

Teacher Only Day - **SCHOOL ONLY**

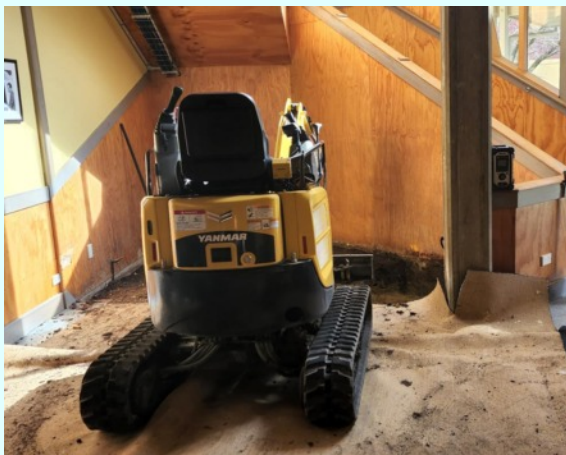
Building Progress Around The School



Where build update



Lift installation in Edwin Ayre



Big toys preparing for lift foundation



Mā te whiritahi, kā whakātutuki ai ngā pūmanawa ā tāngata Together weaving the realisation of potential.

Dear Parents of Classes 1 - 5

During the week of Monday 21 - Thursday 24 November, there will be parent teacher interviews for students from Classes 1 - 5.

We will be using the same booking site as in previous years.

School Interviews - Home: <http://www.schoolinterviews.co.nz>

Due to the end of year busy-ness, each class teacher has selected interview dates which best suit their class schedule. Some teachers may offer interview times on the Friday, **TEACHER ONLY DAY**. When booking please pay special attention to the teacher's individual interview schedules noting the date, day and time of sessions booked.

We encourage you to book on-line. Parents who do not have access to a computer can phone Adrienne to book an appointment.

Bookings **OPEN Friday 4 November at 10:00 am** - bookings will close Friday 18 November at 3:00 pm
Interviews are 15 minutes long.

We are very aware that your time is important. It is respectful practice to ensure our interviews run on schedule. Interview times - start and finish as scheduled. If you are late, extra time is not added to the end of the interview slot. We are working to improve the punctuality of our meetings, and we thank you in advance for your support in this.

Warm wishes Kelly

Booking Your Interview

When you login you will see each class teacher, has a range of times on various days, available for interviews. We trust that the many options available will make it possible for all families to attend.

On-line bookings are open and will **close on Friday 18 November**. Please book at your convenience and note that late bookings will **not** be accepted after the closure date..

How to Book:

1. Log onto the following website: <http://www.schoolinterviews.co.nz>
2. Enter the following code into the 'event code': **uwy46** (lower case)
3. You will then be guided by the website.



When human beings meet together seeking the spirit with unity of purpose then they will also find their way to each other.
Rudolf Steiner

Taikura Fete Sunday 20 November 2022

Ka pai to all the whānau who have already made a commitment to help on the day. If you are not already rostered, please put your hand up for something during the next week.

Class Food Stalls

Each class is allocated one food item at the Real Food Market. This is where the bulk of the income from the Fete is generated. Your class is responsible for sourcing ingredients, following recipes, preparing food in a safe environment and storing food hygienically in advance of the Fete. Roster links to all liaison parents have been emailed out and these should have reached you by now. Get in quick to secure your preferred time slot. Contact Jess directly on 0210 299 3576 with any food related questions.

Children's Activities

Kia ora to our awesome Taikura community. We're busy gearing up for the Fete, excited to be running the children's activities, a big part of what makes our Fete such a special event.

- **Thank you for every parent that has said, 'yes, I can'.**

We do still have a few spots left, and to make them all run we need a few more wonderful parents who are willing and able!

We are very keen to find someone to champion Candle Dipping and at least another parent to do the afternoon spot. We would greatly appreciate someone who has experience with this to help with the first time slot especially, to show other parents/students the magic of making beautiful candles.

We also have spots left for the Photo Booth and Clay Play, a morning spot in Jousting, and afternoon spots in Crystal Panning and the Art Spinner.

For anyone who is uncertain, we are happy to answer questions and all supplies have been organised.

Elsbeth (02108431387) and **Amber** (0212163781) look forward to hearing from you!

Children's Shop

The fete is just around the corner and we still need some items for the children's shop.

For those who don't know the children's shop is a beautiful grotto that only children can enter, they can purchase several items for a couple of beans each. We aim for about 400 quality items in total. I have listed some ideas below and also a link to a Pinterest page that has been created. Try to stay away from "hanging items" due to the tangled nature of such things. Would be great to get more gender-neutral craft ideas.

- felt pocket babies
- cork sail boats
- felt purses
- wool babies
- felt birds & felt mice
- bumble bees on a stick
- wool butterflies
- covered match boxes with seeds or treasures (gemstones) or needle felted wee creatures.
- felt badges (flower shapes or animals etc)
- wire bubble blowers
- Felt gnomes
- Origami creations
- wool in a little bottle creating a rainbow in a bottle.
- rainbow window stars
- mini booklets
- Walnut shell insects - painted shell with added legs or eyes to create insects.
- felt or crochet flowers on a hair clip

<https://www.pinterest.nz/jessicafrederiq/childrens-shop-ideas/>

Magic Beans

All Children's Activities at the Fete will require one or more Magic Beans. They will be available for purchase from Monday 14 November to Friday 18 November ONLY at the school gate from 2:45-3:20pm at a special discounted rate to acknowledge all the time and energy that our school community puts into creating the fete. Magic Beans will then be available for purchase at \$1:00 each on Fete day.

School community discount:

\$10 = 12 Magic Beans in a bag (saving \$4)

\$20 = 28 Magic Beans in a bag (saving \$10)

\$30 = 42 Magic Beans in a bag (saving \$14)

Bags are \$2 each by themselves, you may opt to not get a bag (subtract \$2) or purchase extra bags.

CASH ONLY SALES - please have correct amount if possible - Thank you

Funds Raised:

Fete funds raised are gifted directly to the School Board, however the committee, along with management and staff, is involved in decisions as to where the funds could be best spent. Fete funds are not spent on salaries, topping up donations or attendance dues, or servicing debt. Our primary goal is that the funds benefit children and students directly and in the long term. In recent years fete funds have been used to build our all weather hockey/tennis turf, a shade area outside the turf and created a beautiful, functional and natural playground for the Lower School. This year funds raised will go towards a playground/equipment area for our senior students. The parent and community mahi contributed at the fete is visible and benefits our students daily, and you should all be very proud of these building achievements. We are very grateful, particularly to those who always go the extra mile!

CellPhones And Earbuds at Taikura

Our rule of no cellphone and earbud use on school grounds supports student wellbeing and encourages the human being to be present when in the company of another.

The holding of this boundary is a cooperative endeavor that requires ongoing monitoring and support by parents and teachers. Below is a flow-chart of our procedure should a student choose to use their cellphone and/or earbuds while at school. **For your information a description of the school's response to phone/earbud use follows:**

Cellphone and Earbud Infringements - School Response

First Infringement:

Cellphone or earbuds used while at school -

Items confiscated and sent to the school office - collected at the end of the day.

Letter home notifying whānau of infringement

Second Infringement:

Cellphone or earbuds used while at school -

Items confiscated and sent to the school office - collected at the end of the day.

Letter home notifying whānau of infringement

Third Infringement:

Cellphone or earbuds used while at school -

Items confiscated and sent to the school office - collected at the end of the day.

Letter home notifying whānau of infringement and request made student either leaves phone and/or buds at home or drops them into school office.

URGENT UPDATE TO Absence Notifications

This term we will be moving to app and answer phone absence notifications only, eliminating the need for us to maintain a mobile phone in the office, and lessening the workload for staff having to check multiple devices and sources of information. Many thanks for your understanding and cooperation. Please find instructions on how to download the school app below.

School App

If you have not already done so, **we encourage you to download our SchoolApp into your smart phone.** You will find school contacts, newsletters, a link to our website, term dates, absentee notifications and our calendar which is filled with upcoming events, meetings, camps and trips. Subscribe to class alert groups and you will receive notifications such as class camp school arrival times and meeting reminders straight to your phone. So much useful information!

1. Go to the **App Store** or **Google Play Store** on your mobile device
2. Search **SchoolAppsNZ**
3. Download the **App**
4. Open the **App**
5. When it asks to send notifications – click allow.
6. When it asks to search your **School** – type your **School Name** in the search bar
7. Lastly, subscribe to the Alert Groups you would like to receive alerts for.





Help support the Class 12 Geography students with Taikura's first pumpkin growing competition.

This event will take place on the Autumn harvest festival afternoon

How to enter: Free Giant Atlantic pumpkin seed packs will be handed out at school. You can also pick up a packet of seeds from the office. A very big thank you to Liam for these wonderful seeds!

There are three categories to enter on the day. Competitors can enter as many categories as they like however they need to provide a separate pumpkin per entry.

A gold coin donation is asked per entry.

If you are wishing to enter the largest grown pumpkin category you will need to grow your own pumpkin with the provided seeds.

We highly encourage the pumpkins that are entered to be homegrown. However, we do understand that if you do not have the space or time to grow your own you can purchase your own pumpkin for the carved or best dressed category.

Categories

Biggest Homegrown Pumpkin
Best dressed pumpkin
Most creatively carved pumpkin.

Contestants' pumpkins will be grouped and judged based on the age groups below.

Fun prizes will be available!

Groups

Lower school students (Classes 5 and up)
High school (Classes 8 through to 12)
Staff & Community



FOREST FOLK

Waldorf Inspired Art, Craft and Gift Shop



www.forestfolkers.com

www.instagram.com/forest_folker

www.facebook.com/titirangiforestfolk

Violin - Fiddle Style Lessons

I am offering violin /fiddle style lessons from the beginning of February 2023. The cost is \$100.00 per term with fiddle provided. If you are interested please call Chris Bacchus on 878 6883 or email: chrisbacchus@gmail.com



**TARUNA
COLLEGE**

Connect, Nourish, Sustain

Foundation Course in Anthroposophic Nursing



Starting in February 2023 Taruna College is offering an 18-month programme for registered nurses.

Come and be re-inspired in your nursing work and practice as we deepen our understanding of our profession's unique healing potential and universal cultural significance.

Our studies will introduce principles of an integrative nursing approach including:

- **Working with plants and other substances in various therapeutic external applications**
- **Nursing process informed by concepts of a spiritual anatomy and physiology to add to our knowledge of the physical body**
- **Effective self-care along with strategies that support sustainability in day-to-day life and professional practice.**

If you are interested please visit our website: www.taruna.ac.nz or contact us on 06 8777174