



1 August 2024

Winter Warmer

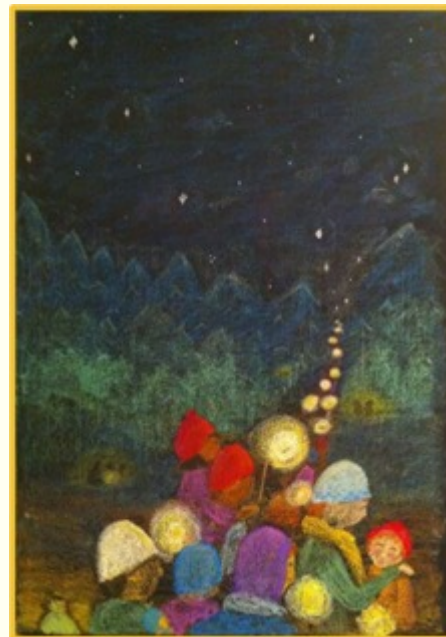
Next Thursday 8 August from 6:00pm the school grounds are open and kai is available for your purchase. Come and listen to live music, wander through Scannell's, buy dinner and enjoy company in community.

Near or just after 7:00pm, the gong will sound, this signifies it is time to make your way to the gym for the annual shadow play. This year's production has never been performed before at Taikura.

This is a family evening and children must be accompanied by their parents. Teachers will not be supervising or responsible for any tamariki. No buildings will be open, other than toilets and the gym for the evening performance.

If they haven't been already, Liaison Parents will be in contact soon with opportunities for whānau to contribute to the creation of this evening.

At all stages of the planning and preparation we have worked to keep labour demands and costs to a minimum. We are conscious of the current cost of living and the stressors on family life. It is our intention to create an evening that whānau and tamariki enjoy. Please only contribute as much as you are able and know this evening is completely voluntary both in participation and contribution.



Winter Warmer Lantern Walk - for Classes 1 -5 and whānau

Lower School children are encouraged to bring their lanterns on this evening. By lantern light they make their way through the lantern walk created in Scannell's Garden by students.

Class 7 creates this lantern walk for the younger children, sourcing and providing the props and decorations, and volunteers from Class 6 walk the students through.

To support both their mahi and the experience of the younger children we ask that **children are accompanied by parents on the walk.**

Important reminder: No lit lanterns or shoes in the gymnasium. Bring a cushion for your comfort.

Winter Warmer Kai Tokens

This year we will be selling small wooden tokens with which you can purchase your kai, in place of the paper tickets which were used in past years.

All food items will be payable **by token only**. Tokens are available to purchase by **CASH ONLY**. The minimum purchase is **2 tokens**. Tokens are available in \$5, \$10 and \$20 lots.

The token purchase station will be situated near the library.



Winter Warmer Kai Menu

Sausage Sizzle - **1 token**

Soup and Bun - various flavours of deliciousness - **2 tokens**

Baked Potato - **2 tokens**

Nachos - **2 tokens**

Mulled Drink - **1 token**

Juice - **2 cups for 1 token**

Apple Crumble with Custard - **2 tokens**

Slices and sweet treats - **1 token**

Popcorn - **1 token**

Marshmallows for toasting on the fire - **2 bags of 5 - 1 token**



If marshmallows are being toasted parents are responsible for their own children's safety.

Children must be accompanied by their parents. Teachers will not be supervising or responsible for any tamariki.

SchoolDocs Policy Reviews for Term Three

This term SchoolDocs is reviewing the following policies: **Concerns and Complaints, Media, Performance Management, Professional Development, Protected Disclosure, Staff Conduct and Staff Leave**. In order to participate in these reviews we encourage you to visit our SchoolDocs site (username: taikurasteiner password: heartwood). Along the top of the page you will see a tab labelled 'Current Review' where you will find a table with links to the policies currently under review.

- Follow the link
- Read the policy
- Click the blue 'start your review' button at the top of the page. A new screen will appear.
- Select your role (board member, staff member, parent/whānau) from the drop-down list.
- Enter you name (optional).
- Submit your ratings and comments.

If you don't have internet access our school office staff can provide you with a printed copy of the policy.

Community Survey - final set of questions

We would like to gather some feedback from our parent body about our school. What do you and your tamariki/rangatahi enjoy most about Taikura? What do you value/connect with most about the various aspects of our Special Character? What areas could we strengthen? This is the **final set** of our questions:

<https://www.surveymonkey.com/r/TTGVZ9V>

We encourage you all to participate, either via the links, emailing us directly, or dropping in handwritten notes, whatever works for you! For those who have not yet got to it, here are the links to the first three sets of questions:

1. <https://www.surveymonkey.com/r/DCQVX99>
2. <https://www.surveymonkey.com/r/8FXWLD9>
3. <https://www.surveymonkey.com/r/RM8597Q>

Please don't hesitate to contact us office@taikura.school.nz or by phone 06 8787 363 if you would like a hard copy, or an emailed version of the survey.

Upcoming Events

Winter Warmer - Thursday 8 August from 6:00pm

Liaison Parent Meeting - Wednesday 14 August at 6:00pm in our Whare Te Manukura

Class 2 Parent Evening - Wednesday 14 August at 6:30pm

Class 10 play performance - Thursday 15 August at 7:00pm

Lower School Cross Country - Monday 19 August from 1:30pm

High School Elective Evening - Wednesday 21 August at 6:30pm

Class One Parent Evening - Wednesday 21 August at 6:30pm

Mid-Term Break - Friday 23 and Monday 26 August

Smokefree and Vapefree Policy

Taikura is smokefree and vapefree, as required by the Smokefree Environments and Regulated Products Act 1990 (s.7A). We comply with the Act and have a smokefree and vapefree policy as part of our commitment to providing a physically and emotionally safe place for students, staff, and the school community (Health and Safety at Work Act 2015; Education and Training Act 2020). We aim to promote a smokefree and vapefree lifestyle to all members of the school community to help protect everyone from second-hand smoke and discourage students from taking up smoking and/or vaping.

Smokefree and vapefree requirements

Our school buildings and grounds (including school car parks and pick-up and drop-off areas) are smokefree and vapefree, 24 hours a day, seven days a week (with no exceptions). This applies to anyone on the school grounds, including students, staff, parents/caregivers, contractors, and people hiring or using the school facilities outside school hours. All school activities off school premises (e.g. EOTC) are also smokefree and vapefree (including transport between venues). This policy applies to all smoking and vaping products, including e-cigarettes.

We include the school road crossing (and rostered adults) in our smokefree and vapefree zone.

We take all reasonably practicable steps to ensure people know that the entire grounds are smokefree and vapefree at all times. To ensure our school is smokefree and vapefree, we:

- display the required signage (i.e smokefree and no vaping signs) at every entrance to the school grounds and the outer entrance of every building
- regularly communicate our policy to the school community (including staff, students, volunteers, and parents/caregivers)
- advise visitors, contractors, anyone working at our school, and anyone hiring or using the school facilities that our buildings and grounds are smokefree and vapefree
- educate students through the curriculum about the harmful effects of smoking, vaping, and exposure to second-hand smoke.

Breaches

Adults smoking or vaping in or around school grounds are reminded that the school is smokefree and vapefree by law and asked to stop or leave the premises.

If a student breaches this policy (either by smoking/vaping or supplying tobacco/vapes to other students), the principal (or their delegate) determines the appropriate actions to be followed. We may offer appropriate counselling and education, and contact parents/caregivers. The following policies may also be relevant:

- Behaviour Management
- Searches, Surrender, and Retention of Property
- Stand-down, Suspension, and Exclusion.

Complaints

Complaints about breaches of this policy involving students and members of the school community may be made through the Raising Concerns process.

Complaints involving smoking or vaping in the workplace are referred to the principal, who may pass these to the board for investigation. Investigations follow legislative guidelines (Smokefree Environments and Regulated Products Act 1990, s.15). We refer complaints to a smokefree enforcement officer as appropriate.

Community Canteen News

Our Community Canteen is now into its 6th term of operation. Thank you to all that have made this possible. Without your koha, be it fruit, veggies, dishwashing liquid, cash and, most importantly, your time, it simply wouldn't be possible to operate! We are grateful to the School Board and management for agreeing to include the Community Canteen on the school website. As well as the added visibility, we hope this will encourage volunteer sign-ups and financial donations. Even though we were well stocked, last term was tough on the roster side and unfortunately the canteen was closed on some days. We are grateful for a significant time commitment by a member of our community this term, which will help to make our roster more reliable. We also received a generous donation of beautiful organic apples from Bostock, which will last us over the winter. Our heartfelt thanks! At the moment we are offering porridge, sweet rice, sweet millet, sweet polenta, all with freshly cooked organic apple sauce. Freshly baked bread is often available and the students enjoy it. This term there will also be warm lemon/ honey/ginger drinks for our Tamariki, to keep the colds at bay. Even though all this sounds really promising, our Community Canteen won't be possible without ongoing contributions from our community. We ask you to please continue to contribute by:

- Signing up as a canteen or class helper: <https://www.signupgenius.com/go/10C0B4EACAE23AAFDC61-47680303-community>
- Gifting funds into our Community Canteen bank account: 38-9025-0307982-00 (One bowl of porridge costs the equivalent of a gold coin per bowl to produce and unfortunately we are starting to run low on funds)
- Donating fresh fruit or munching veggies
- Donating any surplus of citrus from your garden

Missing from the Community Canteen

We are trying to locate a number of missing items which we would dearly like to have returned to us:

- All (!) of our wooden chopping boards
- A knife with a wooden handle
- Several stainless steel containers
- One stainless steel measuring jug



If any of these items have made their way to you, please return them.

On the flip-side we have a number of serving plates/containers from Friday Markets in the canteen, please come and collect them. If you use our Community Canteen for the Friday Market or class events, please make sure that it is left as you found it and that everything that was used gets returned, also please ensure the landfill bin and compost are emptied. Last but not least, if you have chooks, please feel free to sign up for collecting the scraps, which get left out for easy collection.

Thanks for supporting our Community Canteen and feeding our tamariki and rangatahi!

Silke Moenchmeier

On behalf of the Community Canteen group

First XI Hockey Team Fundraiser

Taikura Rudolf Steiner School First XI Hockey Team are selling delicious Kai Pai Pies and Savouries to help fundraise to attend the Lower North Island Secondary Boys' Cup tournament in Gisborne. Funds raised will go toward supporting our players and their families with associated winter tournament costs and expenses. By supporting our fundraiser you are investing in our team! Thank you for supporting Taikura Rudolf Steiner School First XI Hockey Team.

There is a great range of flavours to choose from, fill your freezer with these yummy award-winning pies and savouries just in time for the colder months.

By running our product sales campaign online, it makes it super easy for everyone, share the link with family and friends and they can arrange to collect their products from you at the end of the fundraiser.

Simply follow this link: <https://taikurarudolfsteinerschoolpies.raiseit.co.nz/taikuraofficehockeyfundraiser>

Pick-up day will be at school on Thursday 5 September 2024. Thank you for supporting us with this fundraiser.

Anne Hilton & the Taikura First XI Hockey Team

COMMUNITY NOTICES

Finland Trip Update

E te iwi whanui, he waka eke noa nei pera i a Kupe kua whiriwhiria nga toa nei mo tenei haerenga, Ko Hawaiki Hanara-Kingi, Ko Gabe Tihema no Taikura.

Dearest community, with great pride I announce the taonga that have been selected to participate in the great voyage, the journey likened to Kupe - a voyage to unknown waters and distant lands and cultures taking with them their whānau, school, marae, iwi and will be ambassadors for Aotearoa, invited by the Principal Oula Pihlajamäki to his school, Lastusten Koulu. We plan to visit a Steiner School whilst we are away to share and celebrate our likeness and difference. Joining us will be other toa from Flaxmere College and Karamu High School.

We are asking for any koha, if you have gifts and donations, and want to tautoko in any way please contact us, rangatahipounamu@gmail.com or phone 021 1278279

or deposit into the following account;

He Rangatahi Pounamu: 03-0698-0198353-000

Ref: students' name / Taikura **Particulars:** koha **Code:** your name

Please email us if you require a receipt.

- Please name the student if that is whom you are supporting and let us know who you are
- Our funding that we are given as a group is being divided by all participants

Please support our raffles and fundraising events (tba) we appreciate all awhi, positive vibrations - na tou rourou, naku te rourou ka ora ai te iwi... from your input and from our input we shall thrive. We will be sure to have students presenting about their experience on their return.

Te Whiti Seeds

Mentor Wanted for Class 8 Student

Tara Theyer-Durham is looking for a nail specialist to mentor her for her Class 8 project. If you are a nail technician/specialist and happy to mentor Tara, or you know of someone please contact us (Tara or Melissa (her Mum)) on 0211493024 or email brignall.theyerm@gmail.com. Thank you for the consideration. Melissa

Cabin for Lease

I have a cabin for lease. This can be used as an office or extra bedroom etc. Brand new. Double glazed 3.3m long by 2.3m wide. Please call or text Emil on 021 711 711 for further details please.

Employment Opportunity at Hapi

We need an experienced MARKET GARDENER to manage a small established organic market garden. The role includes: regular plantings to ensure consistent supply, seed raising, maintaining fertility through making & applying composts, liquid manures, biodynamic preps, timely management of pests and disease, harvesting for the cafe & ensuring crops are stored appropriately, general maintenance of maara infrastructure & irrigation, liaising with cafe & supporting cafe operations as required, daily record keeping, ensuring compliance with organic certifiers, health and safety regulations. The role also includes managing garden hands and volunteers who come to help in the gardens.

Please apply directly to Gretta if you are interested and we can have a korero :) 021 720239 gretta@hapi.nz

Rites of Passage

The Rites of Passage Foundation programmes focus on fostering connection and positive growth, enhancing well-being, supporting young people to actualise their goals and strengthening family relationships, through intergenerational, community-led, nature-based rites of passage. Our programmes weave nature connection, story telling, physical challenges, games, ceremony, and creative arts to create an immersive, transformational rites of passage experience. For more information visit <https://www.ropf.org.nz>



TIDES

rites of passage

5-day residential programme in Golden Bay for girls age 14-17 years and their mothers, marking the transition from childhood into young adulthood through intergenerational and community-led rites of passage

1 - 5 OCTOBER 2024 & 14 - 18 JANUARY 2025

Contact Siti for more information:
contact@tides.net.nz
or 027 860 1517



Tracks
Inspiring young men

rites of passage

5-day residential programme in Golden Bay for boys age 14+ years and their fathers, marking the transition from childhood into young adulthood through intergenerational and community-led rites of passage

8 - 12 OCTOBER 2024 & 21 - 25 JANUARY 2025

Contact Adge for more information:
info@tracks.net.nz
or 027 309 8871